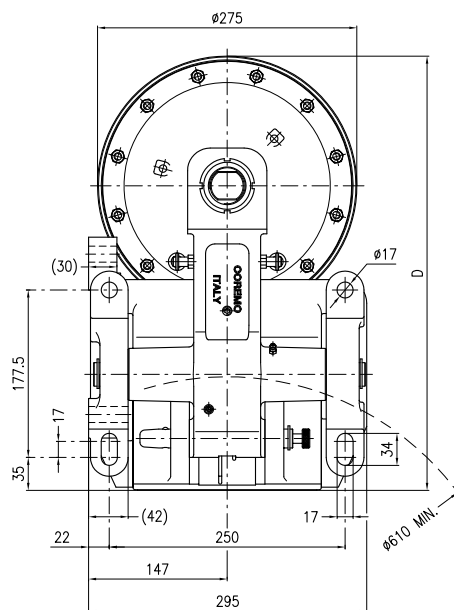
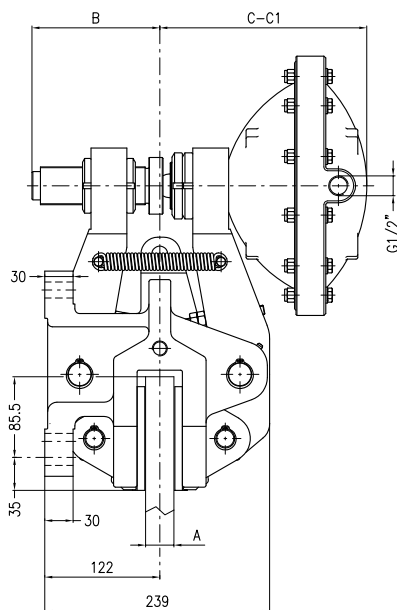


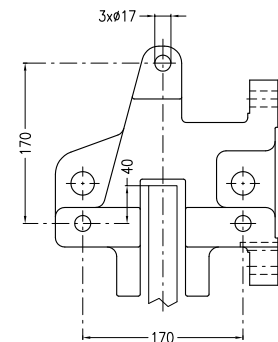
EL4

Freno Pneumatico a Pinza - Positivo

Pneumatic Caliper Brake - Air applied

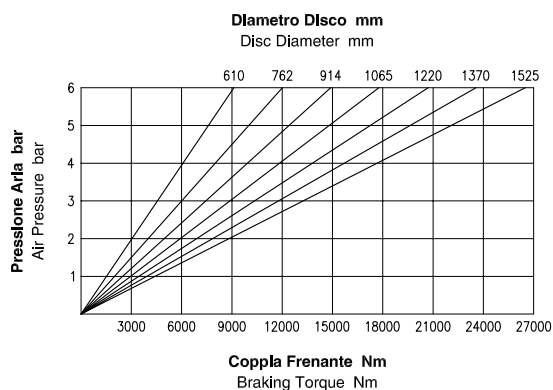


A	B	C	C1	D
Spessore Disco			(max)	
Disc Thickness	mm	mm	mm	mm
25.4	133.5	221.5	243	460
30	135.5	219.5	240.5	460
40	134	221	242	460



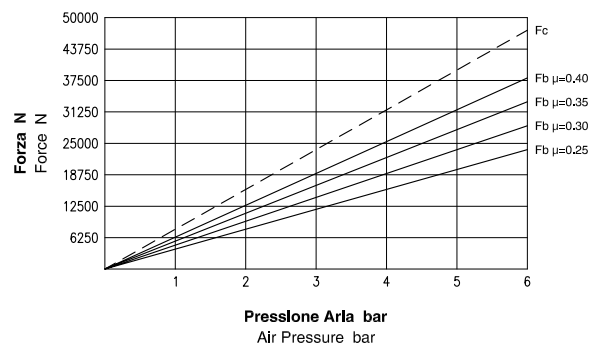
Vista Montaggio Frontale
Frontal Mounting View

Dati Coppia / Torque data



Attenzione: La coppia iniziale può essere inferiore dal 30% al 50% rispetto al valore nominale. **Warning:** The initial braking torque can be from 30% to 50% lower than the nominal value.

Dati Forza / Force data



NOTA: Il grafico riporta l'andamento della forza tangenziale al variare del coefficiente di attrito. **NOTE:** The diagram shows the braking force performance with different friction coefficients.

Dati Tecnici

Coefficiente di attrito nominale $\mu = 0.40$
Forza tangenziale $F_b = F_c \cdot 2 \cdot \mu$ (N)

Forza di chiusura $F_c : 47500$ N a 6 bar
Forza tangenziale $F_b : 38000$ N a 6 bar

Raggio effettivo disco $Re =$ Raggio disco (m) - 0.065
Coppia frenante $Mb = F_b \cdot Re$ (Nm)

Pressione Max : 6 bar
Volume aria : 0.85 dm³

Peso : 66 kg

Spessore del ferodo nuovo : 8 mm
Usura Max totale : 12 mm

Technical Data

Nominal friction coefficient $\mu = 0.40$
Braking force $F_b = F_c \cdot 2 \cdot \mu$ (N)

Clamping force $F_c : 47500$ N at 6 bar
Braking force $F_b : 38000$ N at 6 bar

Effective disc radius $Re =$ Disc radius (m) - 0.065
Braking torque $Mb = F_b \cdot Re$ (Nm)

Max pressure : 6 bar
Air Volume : 0.85 dm³

Weight : 66 kg

Thickness of new lining : 8 mm
Max total wear : 12 mm



Coremo Ocmea S.p.A. - T +39 02 4880697 - F +39 02 4881940
E-mail : info@coremo.it - Internet : www.coremo.com

I.T. 170201