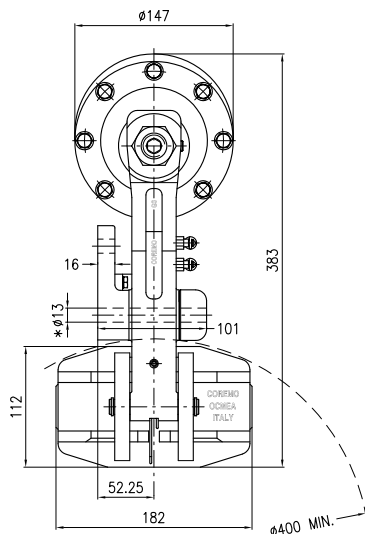
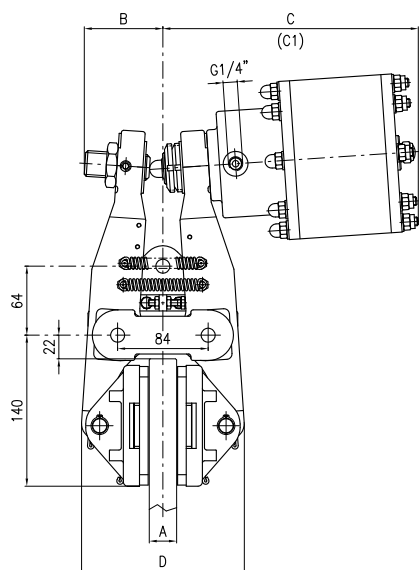


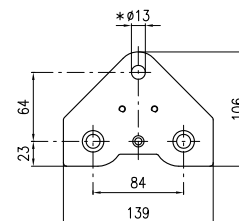
# G3NID

## Freno Idraulico a Pinza - Negativo Hydraulic Caliper Brake - Spring applied



A	B	C	C1 (max)	D
Spessore Disco Disc Thickness mm	mm	mm	mm	mm
25.4	73	237	245.5	151
40	85.5	245	253.5	165.5

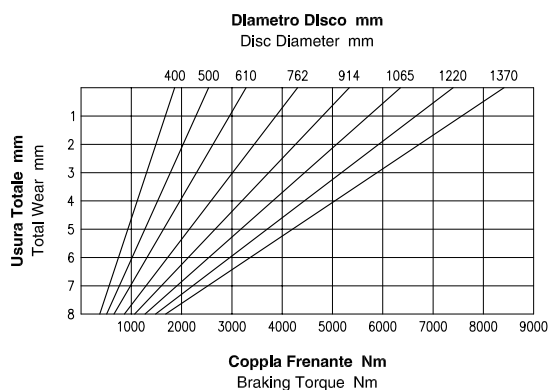
Applicabile anche su disco spessore 30 mm  
Applicable also on disc thickness 30 mm



Vista Base di Montaggio  
Mounting Base View

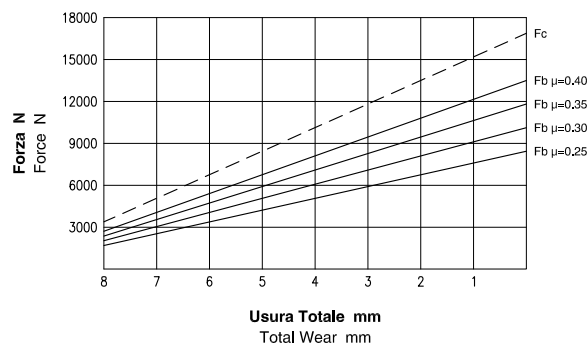
- \* Viti M12 classe 8.8 fornite con la pinza
- \* Bolts M12 grade 8.8 supplied with caliper

### Dati Coppia / Torque data



**Attenzione:** La coppia iniziale può essere inferiore dal 30% al 50% rispetto al valore nominale. **Warning:** The initial braking torque can be from 30% to 50% lower than the nominal value.

### Dati Forza / Force data



**NOTA:** Il grafico riporta l'andamento della forza tangenziale al variare del coefficiente di attrito. **NOTE:** The diagram shows the braking force performance with different friction coefficients.

### Dati Tecnici

**Coefficiente di attrito nominale  $\mu = 0.40$**   
**Forza tangenziale  $F_b = F_c \cdot 2 \cdot \mu$  (N)**  
**Forza di chiusura  $F_c : 16875$  N**  
**Forza tangenziale  $F_b : 13500$  N**  
**Raggio effettivo disco  $Re =$  Raggio disco (m) - 0.062**  
**Coppia frenante  $M_b = F_b \cdot Re$  (Nm)**  
**Pressione minima di apertura : 50 bar**  
**Pressione Max : 100 bar**  
**Volume olio : 0.08 dm<sup>3</sup>**  
**Volume olio per uno spostamento di 2mm per ciascun ferodo : 0.017 dm<sup>3</sup>**  
**Peso : 22 kg**  
**Spessore del ferodo nuovo : 8 mm**  
**Usura Max totale : 10 mm**

### Technical Data

Nominal friction coefficient  $\mu = 0.40$   
Braking force  $F_b = F_c \cdot 2 \cdot \mu$  (N)  
Clamping force  $F_c : 16875$  N  
Braking force  $F_b : 13500$  N  
Effective disc radius  $Re =$  Disc radius (m) - 0.062  
Braking torque  $M_b = F_b \cdot Re$  (Nm)  
Minimum release pressure : 50 bar  
Max pressure : 100 bar  
Oil Volume : 0.08 dm<sup>3</sup>  
Total oil displacement for 2mm movement of each pad : 0.017 dm<sup>3</sup>  
Weight : 22 kg  
Thickness of new lining : 8 mm  
Max total wear : 10 mm



Coremo Ocmea S.p.A. - T +39 02 4880697 - F +39 02 4881940  
E-mail : info@coremo.it - Internet : www.coremo.com

I.T. 210618