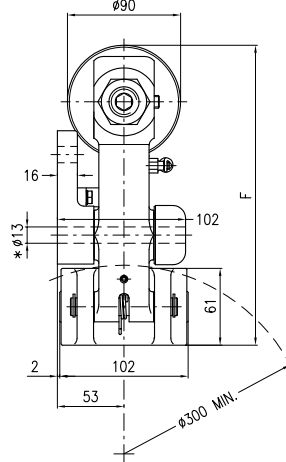
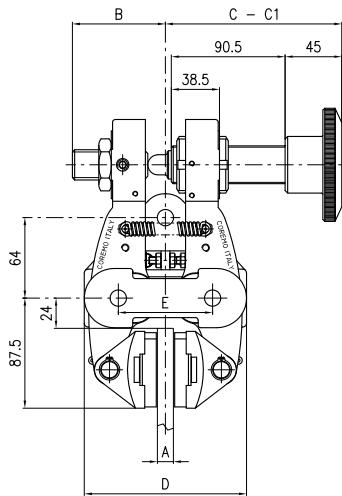


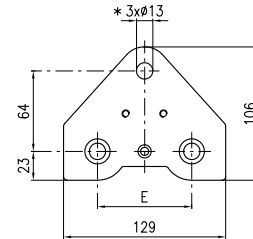
**DM**

# Freno Manuale a Pinza

## Manual Caliper Brake



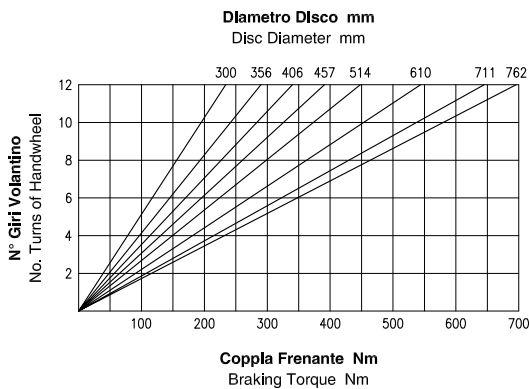
A Spessore Disco Disc Thickness mm	B mm	C mm	C1 (max) mm	D mm	E mm	F mm
12.7	74	140	154	129	75	238.5
25.4	73.5	142	154.5	132	84	241.5
30	85	149	164	140	75	238.5
40	81.5	154	167	149	84	238.5



**Vista Base di Montaggio**  
Mounting Base View

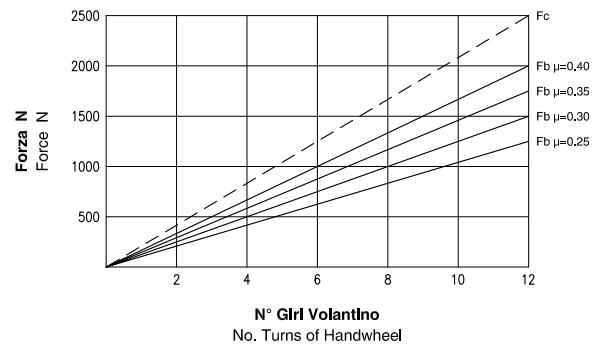
- \* Viti M12 classe 8.8 fornite con la pinza
- \* Bolts M12 grade 8.8 supplied with caliper

### Dati Coppia / Torque data



**Attenzione:** La coppia iniziale può essere inferiore dal 30% al 50% rispetto al valore nominale. **Warning:** The initial braking torque can be from 30% to 50% lower than the nominal value.

### Dati Forza / Force data



**NOTA:** Il grafico riporta l'andamento della forza tangenziale al variare del coefficiente di attrito. **NOTE:** The diagram shows the braking force performance with different friction coefficients.

### Dati Tecnici

Coefficiente di attrito nominale  $\mu = 0.40$   
Forza tangenziale  $F_b = F_c \cdot 2 \cdot \mu$  (N)

Forza di chiusura  $F_c$  : 2500 N (12 giri volantino)  
Forza tangenziale  $F_b$  : 2000 N (12 giri volantino)

Raggio effettivo disco  $R_e = \text{Raggio disco (m)} - 0.033$   
Coppia frenante  $M_b = F_b \cdot R_e$  (Nm)

Peso : 9.9 kg

Spessore del ferodo nuovo : 11 mm  
Usura Max totale : 12 mm

### Technical Data

Nominal friction coefficient  $\mu = 0.40$   
Braking force  $F_b = F_c \cdot 2 \cdot \mu$  (N)

Clamping force  $F_c$  : 2500 N (12 turns of handwheel)  
Braking force  $F_b$  : 2000 N (12 turns of handwheel)

Effective disc radius  $R_e = \text{Disc radius (m)} - 0.033$   
Braking torque  $M_b = F_b \cdot R_e$  (Nm)

Weight : 9.9 kg

Thickness of new lining : 11 mm  
Max total wear : 12 mm



Coremo Ocmea S.p.A. - T +39 02 4880697 - F +39 02 4881940

E-mail : info@coremo.it - Internet : www.coremo.com

I.T. 191115