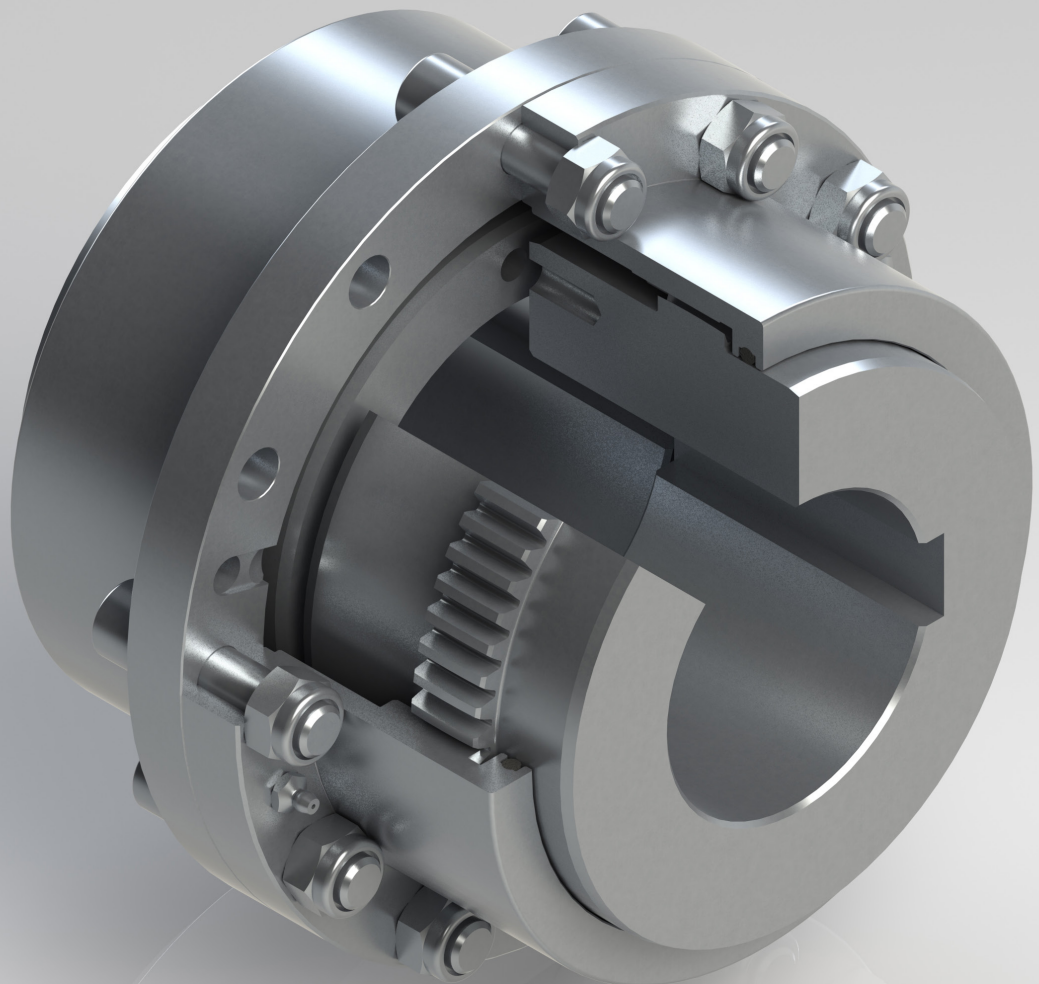


Giunti di Trasmissione Northon

Northon Transmission Couplings



Giunti di Trasmissione

Transmission Couplings



Giunti Oscillanti a Denti

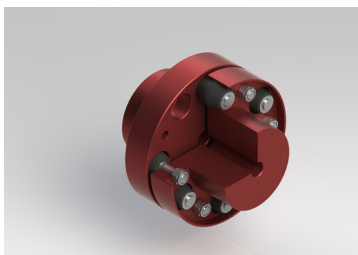
Gear Oscillating Couplings

(Serie Z)

Grandezze da \varnothing 110 a \varnothing 1935 mm.
Coppie di trasmissione da 182 a 1570000 daNm
Dimensions from \varnothing 110 to \varnothing 1935 mm.
Torque from 182 to 1570000 daNm

Studiati per compensare tutti i disallineamenti angolari e paralleli che si possono riscontrare nel collegamento degli alberi di due macchine.

Designed to compensate all the angular and parallel misalignments that may be found connecting the shafts of two machines.



Giunti Elastici

Elastic Couplings

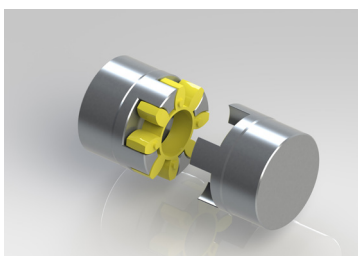
(Serie PN)

Grandezze da \varnothing 60 a \varnothing 1250 mm.
Coppie di trasmissione da 3,7 a 35790 daNm
Dimensions from \varnothing 60 to \varnothing 1250 mm.
Torque from 3,7 to 35790 daNm

Serie PN

Studiati per assorbire urti torsionali, vibrazioni, e per compensare tutti i disallineamenti angolari e paralleli che si possono riscontrare nel collegamento degli alberi rotanti di due macchine e garantire, nello stesso tempo, la trasmissione della potenza richiesta.

Designed to absorb vibrations and torsional strains; they compensate all the angular and parallel misalignments that may be found connecting the shafts of two machines, ensuring the power transmission.



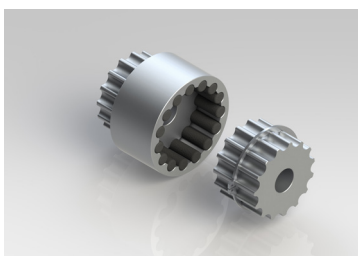
(Serie PSA)

Grandezze da \varnothing 40 a \varnothing 200 mm.
Coppie di trasmissione da 1 a 240 daNm
Dimensions from \varnothing 40 to \varnothing 200 mm.
Torque from 1 to 240 daNm

Serie PSA

Vengono impiegati per accoppiare alberi coassiali. Pur trasmettendo coppie elevate, sono caratterizzati da ingombri minimi e sono perciò consigliati ove si disponga di spazi limitati.

Used to connect coaxial shafts, they can be applied where limited space is available: they transmit very high torque occupying small spaces.



(Serie RE)

Grandezze da \varnothing 58 a \varnothing 129 mm.
Coppie di trasmissione da 11 a 165 daNm
Dimensions from \varnothing 58 to \varnothing 129 mm.
Torque from 11 to 165 daNm

Serie RE

Vengono impiegati per il collegamento di alberi coassiali ed offrono grandi vantaggi, quali una perfetta equilibratura dinamica, facilità di smontaggio e sostituzione degli elementi elastici, alluminio antiossidante e ingombri ridotti.

They are applied to connect coaxial shafts and offer great advantages such as near-perfect dynamic balancing, easy dismantling and replacement of the flexible elements, anti-oxidant aluminium and compact dimensions.



Giunti Flessibili a Lamelle

Flexible Disc Couplings

(Serie FLX)

Grandezze da \varnothing 80 a \varnothing 630 mm.
Coppie di trasmissione da 10 a 9200 daNm
Dimensions from \varnothing 80 to \varnothing 630 mm.
Torque from 10 a 9200 daNm

Impiegati per trasmettere il moto tra gli alberi coassiali di due macchine. Torsionalmente rigidi sono in grado di assorbire urti garantendo sicurezza e affidabilità nella trasmissione, anche in presenza di disassamenti angolari, paralleli e allungamenti assiali, con rotazioni indifferentemente destre o sinistre.

Used to transmit the motion between the coaxial shafts of two machines. Torsionally rigid, they absorb strains, ensuring security and reliability even in case of angular and parallel misalignments or axial displacement. They can be applied for both right and left rotations.

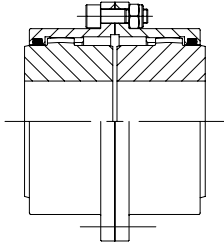
Giunti Oscillanti a denti

Costruzione in acciaio da \varnothing 110 a \varnothing 1935 mm e coppie di trasmissione da 182 a 1570000 daNm.

Gear Oscillating Couplings

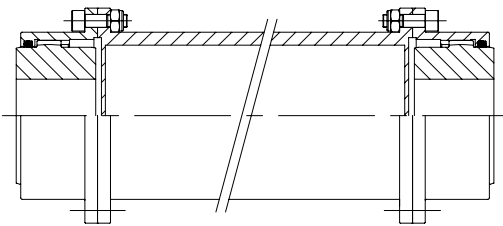
Steel construction from \varnothing 110 to \varnothing 1935 mm and nominal torque from 182 to 1570000 daNm.

SERIE Z



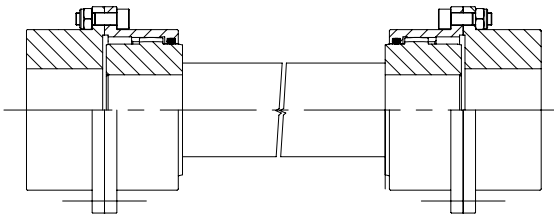
Versione standard con due mozzi oscillanti
Type with two oscillating hubs

SERIE ZAT



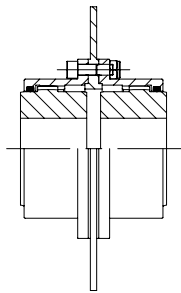
Versione con allunga tubolare
Type with spacer

SERIE ZI-AF



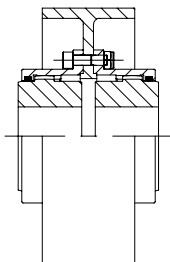
Versione con albero flottante
Type with floating shaft

SERIE ZDF



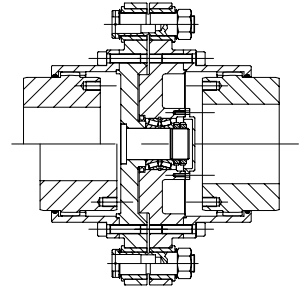
Versione con disco freno
Type with brake disc

SERIE ZFF



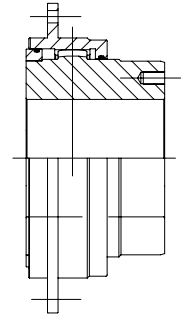
Versione con fascia freno
Type with brake band

SERIE ZSR



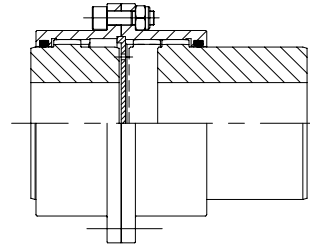
Versione con spine di recisione
Type with shear pins

SERIE ZTS



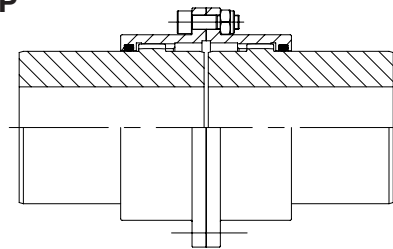
Versione per tamburi di sollevamento
Type for rope drum

SERIE ZSA



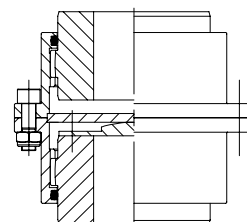
Versione con scorrimento assiale
Type with axial sliding

SERIE Z2P



Versione con due mozzi prolungati
Type with two extended hubs

SERIE ZV



Versione per montaggio verticale
Type for vertically assembly

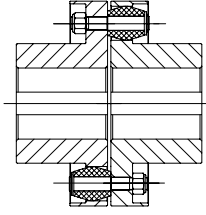
Giunti elastici

Costruzione in acciaio da $\varnothing 40$ a $\varnothing 1250$ mm e coppie di trasmissione da 1 a 35790 daNm.

Elastic Couplings

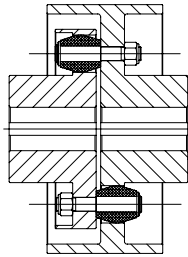
Steel construction from $\varnothing 40$ to $\varnothing 1250$ mm and nominal torque from 1 to 35790 daNm.

SERIE PN



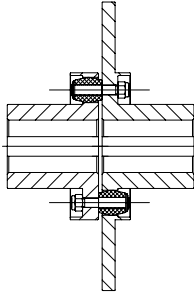
Versione standard
Standard type

SERIE PNFF



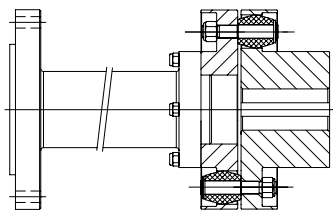
Versione con fascia freno
Type with brake band

SERIE PNDF



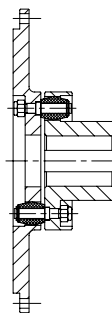
Versione con disco freno
Type with brake disc

SERIE PNAFL



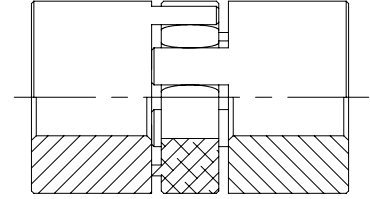
Versione con allunga tubolare e attacco a flangia
Type with spacer and connection flange

SERIE PNAF



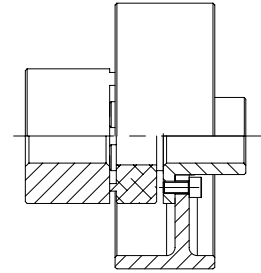
Versione con attacco a flangia
Type with connection flange

SERIE PSA



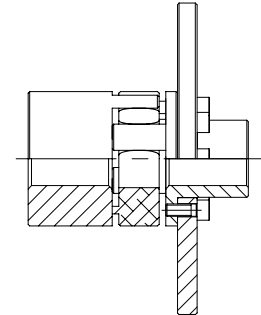
Versione standard
Standard type

SERIE PSAFF



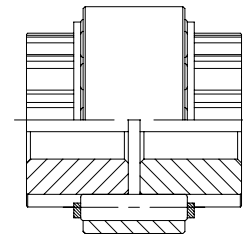
Versione con fascia freno
Type with brake band

SERIE PSADF



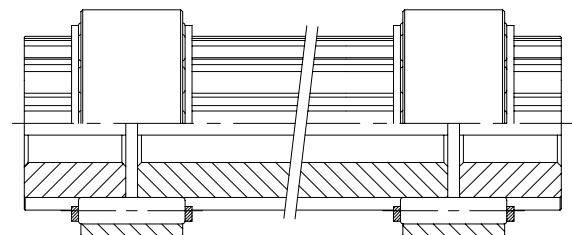
Versione con disco freno
Type with brake disc

SERIE RE



Versione standard
Standard type

SERIE RE



Versione con albero flottante
Type with floating shaft

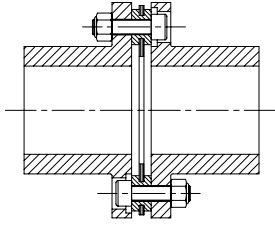
Giunti flessibili a lamelle

Costruzione in acciaio da $\varnothing 80$ a $\varnothing 630$ mm e coppie di trasmissione da 10 a 9200 daNm.

Flexible Disc Couplings

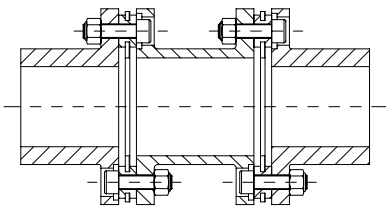
Steel construction from $\varnothing 80$ to $\varnothing 630$ mm and nominal torque from 10 to 9200 daNm.

SERIE FLX



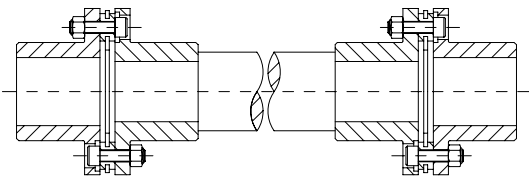
Versione standard
Standard type

SERIE FLX-AT



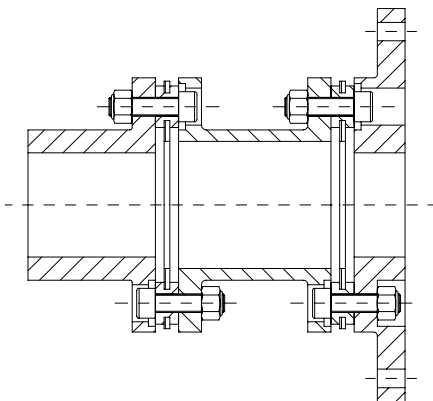
Versione con allunga tubolare
Type with spacer

SERIE FLX-AI



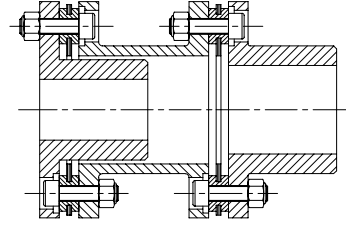
Versione con albero intermedio e doppio giunto
Type with intermediate shaft and double coupling

SERIE FLX-AT.AF



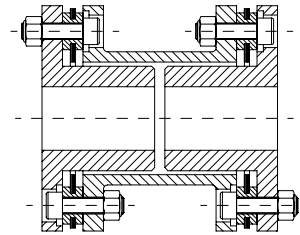
Versione con allunga tubolare e attacco a flangia
Type with spacer and connection flange

SERIE FLX-AT.1MR



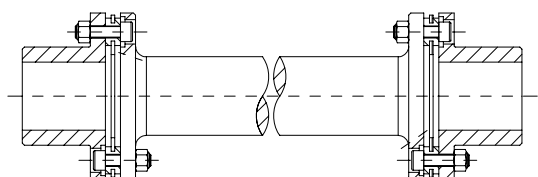
Versione con allunga tubolare e un mozzo rovesciato
Type with spacer and one upside-down hub

SERIE FLX-AT.2MR



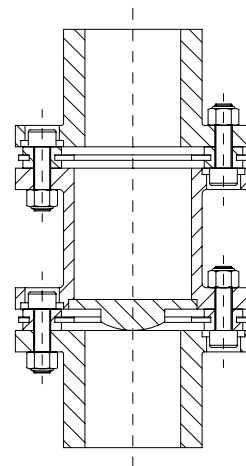
Versione con allunga tubolare e due mozzi rovesciati
Type with spacer and two upside-down hubs

SERIE FLX-AF



Versione con albero intermedio flangiato e due semigiunti
Type with intermediate shaft and two half couplings

SERIE FLX-ATV



Versione con allunga tubolare per montaggio verticale
w

Coremo Ocmea SpA
Freni e Frizioni Industriali
 Industrial Brakes & Clutches



Coremo Ocmea produce freni e frizioni ad azionamento meccanico, pneumatico ed idraulico per i settori del filo & cavo, lamiera, siderurgico, tessile, carta, converting, packaging ed in generale per tutte le applicazioni industriali.

Coremo Ocmea manufactures mechanical, pneumatic and hydraulic brakes and clutches for the industries of wire & cable, metalforming, steel, textile, paper, converting, packaging and for all other industrial applications.

Coremo Ocmea, fondata nel 1960, ha sede in Assago (MI), in uno stabilimento di 5.500 m².

Coremo Ocmea, established in 1960, is based in Assago - Milan (Italy) with a 5.500 m² plant.

Coremo Ocmea S.p.A. Coremo France

Via G. Galilei 12
 20090 Assago (MI)
 T + 39 02 488 06 97
 F + 39 02 488 19 40

12 avenue de Prés
 78180 Montigny le Bretonneux
 Tel. +33/01 48 94 76 72
 Fax +33/01 48 94 13 51

info@coremo.it
coremo.com

coremo.fr



Cert. n. 0238

ATEX
 ATMOSPHERES EXPLOSIBLES